

TASMAN SEA SERIES

6,600-24,500 GPD

25-93 m³/day

Where rugged design meets innovative technology the dependable Tasman Sea series is a plug and play reverse osmosis system designed for reliable continuous operation with minimal operator intervention. Its light weight, compact and easily accessible design is ideal for jack-up drilling rigs, semi-sub, drill ships, pipe lay vessels, offshore support vessels, cruise ships, etc.

The Tasman Sea seamlessly aligns to offshore desalination equipment requirements ensuring availability of high quality water, regardless of incoming sea water conditions or wherever your journey takes you around the world.

Features & Benefits

- Low Maintenance oil-free pump
- Local 7" HMI touch screen with complete monitoring and control
- Modbus Communication for remote monitoring and control
- Built in Clean in Place (CIP) system
- Light-weight marine duty powder coated aluminum frame
- Isolated High Voltage Panel for safety
- Plug and Play solution for easy installation
- User friendly operation/interface

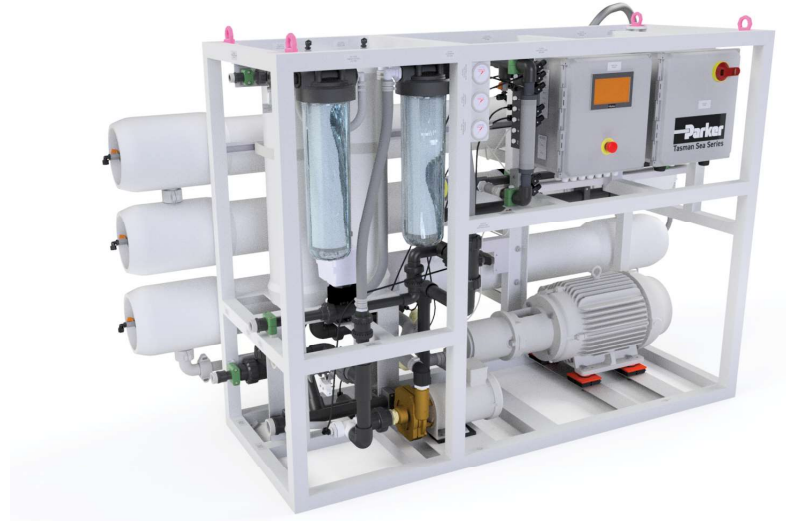
Additional Options

- Automatic Fresh Water Flush
- Built in Cyclone Separation
- Customizable interface connections
- Dual Pass option for technical water applications

Optional Accessories

- pH neutralizer (remineralizer)
- IMF media filter¹ (Auto/Manual)
- Chemical dosing system¹
- UV Sterilizer¹

¹Requires Transformer Panel for RO System Control
Part No. 0901166 for 380V-410V RO Systems
Part No. 0901008 for 440V-480V RO System



Specifications

Part# A606	Voltage	Capacity GPD	Capacity GPD/ M ³ /D	Membranes Required	Weight lbs/kg	Dimensions (in/mm)
-45	440-480/60/3	6,600 - 13,200	25 - 50	2	1117/507	109x61x58 2758x1026x1473
-46	380-415-50/3	6,600 - 13,200	25 - 50	2	1158/525	
-70	440-480/60/3	14,500 - 20,600	55 - 78	4	1224/555	
-71	380-415-50/3	14,500 - 20,600	55 - 78	4	1265/574	
-90	440-480/60/3	20,150 - 24,500	80 - 93	6	1326/603	
-91	380-415-50/3	20,150 - 24,500	80 - 93	6	1370/622	

¹ Membranes sold separately.

² Production capacity is based @ 25 °C & 35,000 PPM

Consumables/Spare Parts

Part Number	Description
33-5105	Filter, 20 Micron
33-5104	Filter, 5 Micron
33-0083	Element Charcoal
20-4096	Probe, Conductivity
2317100701	Transducer 300
2317102001	Transducer 0-2000
40012008	CIP Cleaning Element #1
40012009	CIP Cleaning Element #2
40012021	Preservation Chemical Element #3
21-1122	Silicone Grease, Slube 884-2
91-3557	Meter, TDS, PH, Handheld, Digital
27240331PK	Element, Sea Water
TM-A606-P	Operation Manual, Paper Copy
TM-A606	Operation Manual, Electronic Copy (No Charge)

¹ Membrane elements are sold separately.

Flange Kit Options

Part Number	Description
61012054	Flange Kit - T/S ANSI, PVC
61012055	Flange Kit - T/S DIN, PN16, PVC
61012056	Flange Kit - T/S JIS, 10K, PVC

Ordering Information



Capacity/Voltage Phase	
CODE	DESCRIPTION
45	45 m3/day - 60Hz
46	45 m3/day - 50Hz
70	70 m3/day - 60Hz
71	70 m3/day - 50Hz
90	45 m3/day - 60Hz
91	45 m3/day - 50Hz

Upgrade Option	
CODE	DESCRIPTION
A	Auto Fresh Water Flush
H	Hydrocyclone
HA	Both upgrades
Blank	No upgrades

Parker Hannifin Corporation
Water Purification
 2630 E. El Presidio Street
 Carson, CA 90810
 310 608 5600
 bwf.car.support@support.parker.com
 www.parker.com/waterpurification

To maintain peak performance, always use genuine Parker Village Marine replacement parts. We reserve the right to change our specifications or standards without notice.

WARNING: This product can expose you to chemicals including Di(2-ethylhexyl) phthalate (DEHP), which is known to the state of California to cause cancer and birth defects or other reproductive harm. For more information go to www.P65Warnings.ca.gov.

